

### 1.3MegapixelWater-Proof & Vandal-Proof IR Network Dome Camera



#### Features

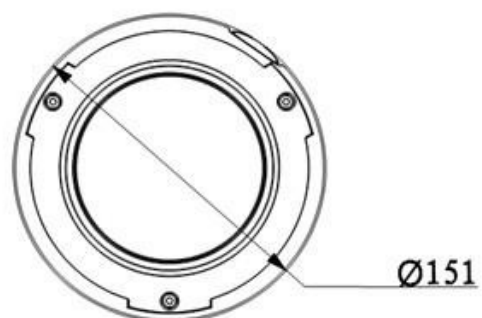
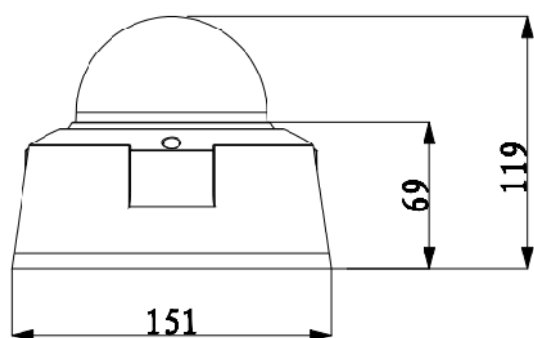
- 1/3" 1.3Megapixel progressive scan Aptina CMOS
- H.264 & MJPEG dual-stream encoding
- Max 25/30fps@1.3M(1280×960)
- DWDR, Day/Night(ICR), 3DNR, Auto iris, AWB, AGC, BLC
- Multiple network monitoring: Web viewer, CMS(DSS/PSS) & DMSS
- 2.7~9mm varifocal lens
- Built-in 1/1 alarm in/out
- Max. IR LEDs Length 20m
- Micro SD memory, IP66, IK10, PoE

### Technical Specifications




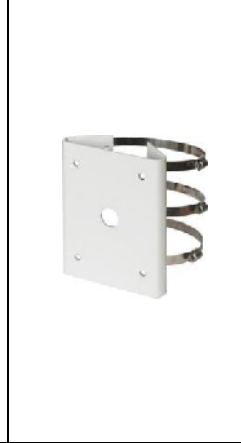
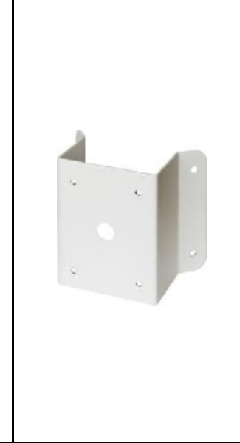
Model	IPC-HDBW5100P	IPC-HDBW5100N
<b>Camera</b>		
Image Sensor	1/3" 1.3Megapixel Aptina CMOS	
Effective Pixels	1280(H)x960(V)	
Scanning System	Progressive	
Electronic Shutter Speed	Auto/Manual 1/3~1/10000	Auto/Manual 1/4~1/10000
Min. Illumination	0.05lux/F1.4(color), 0Lux/F1.4(IR on)	
S/N Ratio	More than 50db	
Video Output	1 channel BNC(1.0Vp-p, 75Ω)	
<b>Camera Features</b>		
Max. IR LEDs Length	20m	
Day/Night	Auto(ICR)/Color/B/W	
Backlight Compensation	Off/BLC/HLC/DWDR	
White Balance	Auto/Manual	
Gain Control	Auto/Manual	
Noise Reduction	3D	
Privacy Masking	Up to 4 areas	
<b>Lens</b>		
Focal Length	2.7~9mm	
Max Aperture	F1.4	
Focus Control	Manual	
Angle of View	H: 101°(Wide)~30.4°(Tele)	
Lens Type	Manual/Auto Iris (DC)	
Mount Type	Board-in Type	
<b>Video</b>		
Compression	H.264/ MJPEG	
Resolution	1.3M(1280×960)/ D1(704×576)	1.3M(1280×960) / D1(704×480)
Frame Rate	Main Stream	1.3M (1 ~ 25/30fps)
	Sub Stream	D1(1 ~ 25/30fps)
Bit Rate	H.264: 16K ~ 8192Kbps	
<b>Audio</b>		
Compression	G.711a/G.711u(64kbps)/PCM(128kbps)	
Interface	1/1 channel In/Out	
<b>Network</b>		
Ethernet	RJ-45 (10/100Base-T)	
Wi-Fi	N/A	
Protocol	IPv4/IPv6, HTTP, HTTPS, SSL, TCP/IP, UDP, UPnP, ICMP, IGMP, SNMP, RTSP, RTP, SMTP, NTP, DHCP, DNS, PPPOE, DDNS, FTP, IP Filter, QoS, Bonjour	
ONVIF	ONVIF Profile S	
Max. User Access	20 users	

Smart Phone	iPhone, iPad, Android, Windows Phone
<b>Auxiliary Interface</b>	
Memory Slot	Micro SD, Max 32GB
RS485	N/A
Alarm	1/1 channel In/Out
PIR Sensor Range	N/A
<b>General</b>	
Power Supply	AC24V/DC12V, PoE(802.3af)
Power Consumption	<5W
Working Environment	-20°C~+60°C, Less than 90% RH
Ingress Protection	IK10
Vandal Resistance	IP66
Dimensions	Φ151mm×119mm
Weight	1.25kg

## Dimensions (mm)



## Accessories (optional)

				
PFA100	PFB300S	PFA120	DH-65FQ	DH-65FW